

Learn about Free Early Childhood Education and Care

<<From October 2019>>

There will be no tuition fees for  
kindergarten / nursery and  
other dayCare centers for ages 3-5.



Contact List to Sakura City Hall

Inquiries regarding	Contact	
General info. about the system	(Child Policy Division) Kodomo-seisaku-ka Kikaku-zaimu-han	043-484-6139
Application	(Childcare Division) Kodomo-hoiku-ka nyuuen-kanri-han	043-484-6245
Free education for children with disabilities	(Disability Welfare Division) Shoogai-fukushi-ka Jiritsu-shien-han	043-484-4153
Free education for public kindergartens	(Academic Affairs Division) Gakumu-ka Gakuji-han	043-484-6186

\*Please inquire in Japanese

## Tuition Fee Elimination is valid depending on



### ① Private kindergarten

3 ~ 5<sup>\*2</sup> yrs old

Tuition fee(including enrollment fee)  
is covered up to ¥25,700/month

### ② Public kindergarten or Certified ECEC\*<sup>1</sup> (kindergarten-type)

3 ~ 5<sup>\*2</sup> yrs old

Tuition fee is free

The household meets the requirements for the " Need for childcare " (c.f. page5)

Yes

No

3-5yrs old *class (SY)*: \*<sup>3</sup>

Fee for extended childcare service at kindergarten\*<sup>4</sup>  
is also covered up to ¥450/day (max. ¥11,300/month)

※As for 3<sup>\*2</sup>yrs old child, it is only eligible  
for households that are exempted from  
municipal residency tax.

Fee for extended childcare service  
at kindergarten\*<sup>4</sup> is NOT eligible for  
fee elimination.

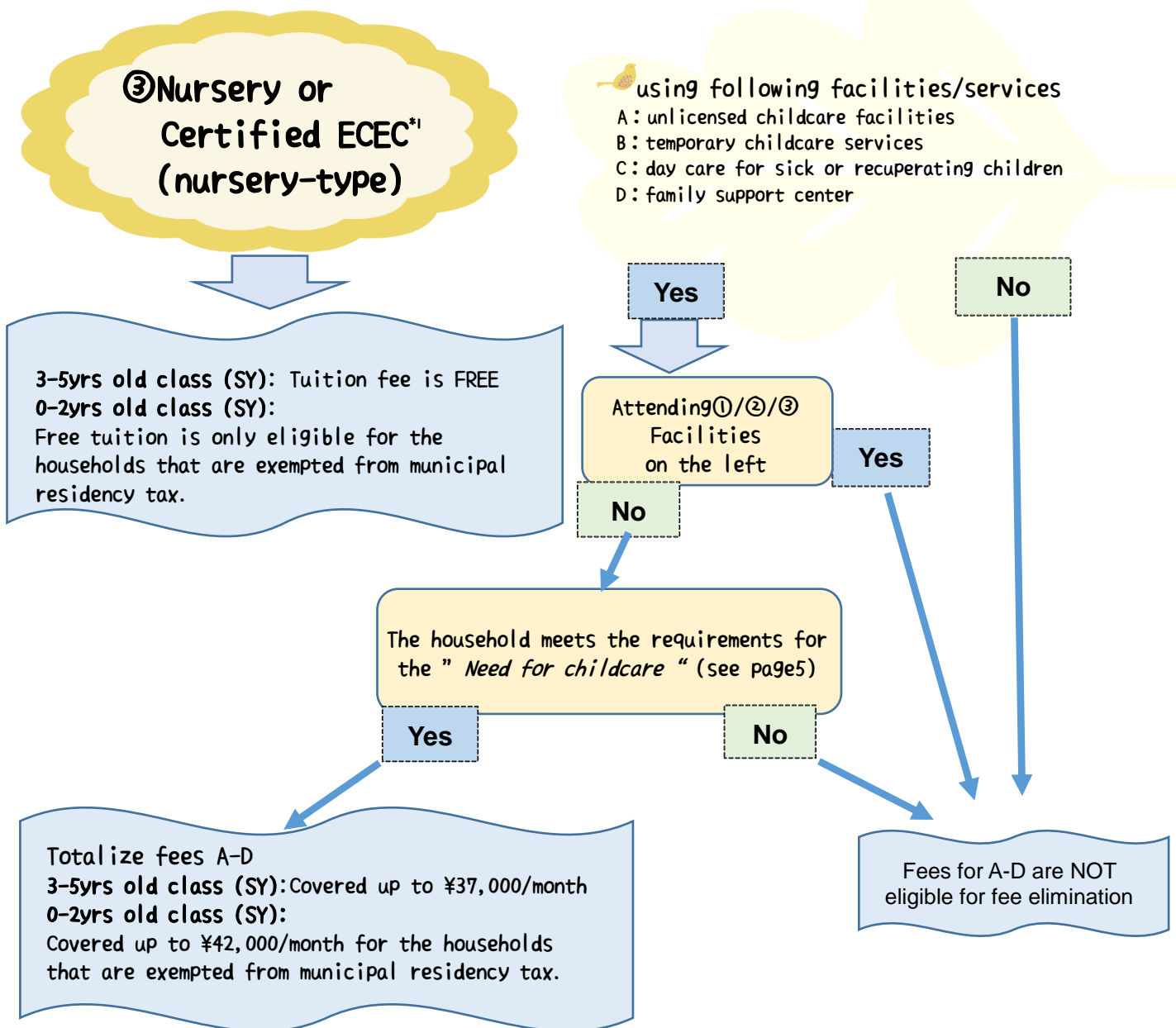
<<remark◆\*3 s/definition>>

- ◆\*1 ECEC: centers for Early Childhood Education and Care
- ◆\*2 3 yrs old: applies to the period from the date when the child turns 3 to the first March 31<sup>st</sup> thereafter
- ◆\*3 (SY): School Year =April 2 through next April 1
- ◆\*4 Extended childcare service at kindergarten(" azukari-hoiku ")  
:childcare service before and after kindergarten hours and childcare services during a long recess  
such as summer recess.

### Fee elimination may not apply on the following items:

As the following items are not covered by the " free early childhood education and care system ",  
such fees are to be paid at parent/guardian' s expenses;  
uniform, school bus, special activities, school meals, extended-hours childcare service  
at nursery(" enchoo-hoiku "), etc.

## the type of the facility and the age of the child



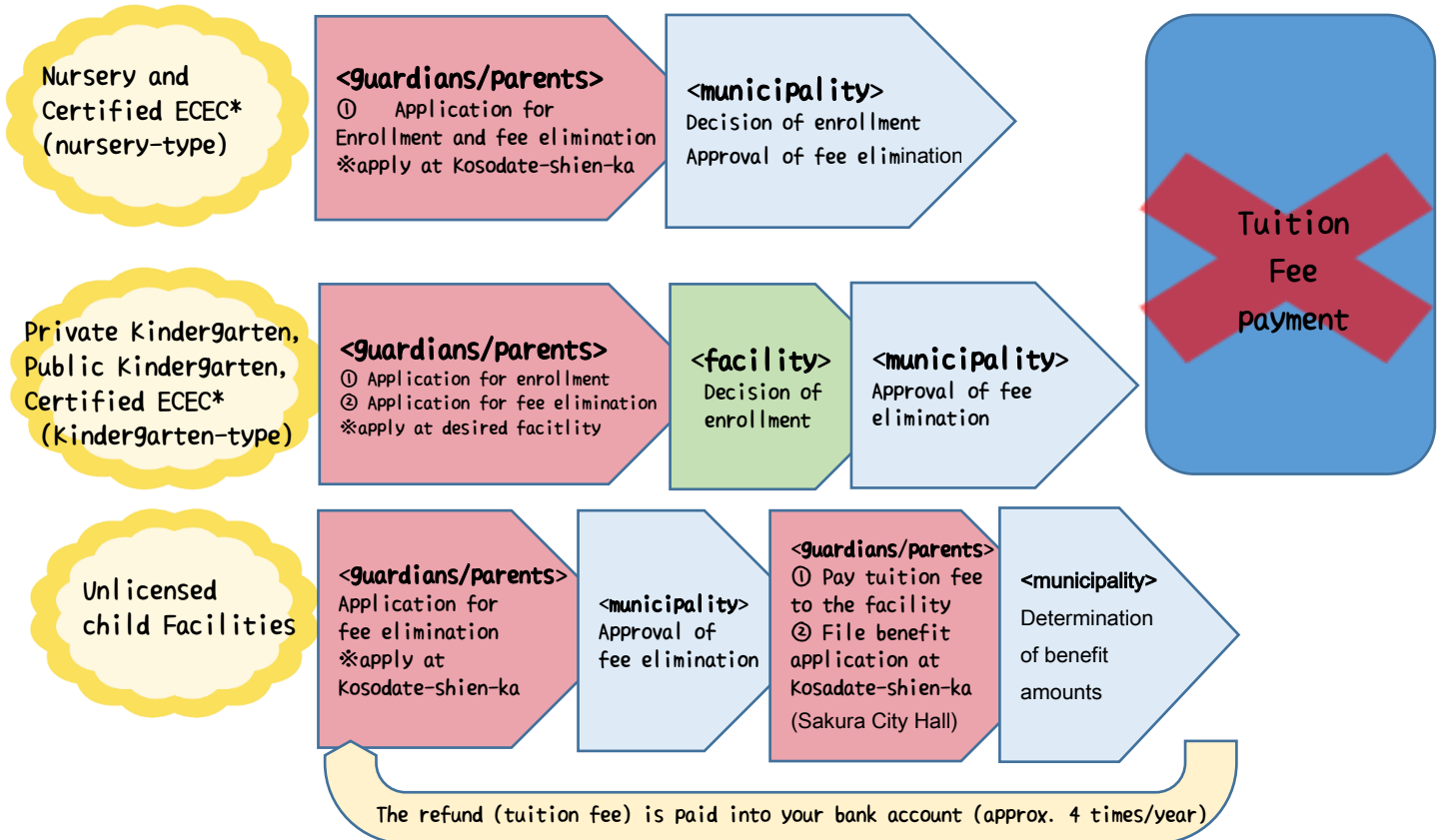
### Utilization of facilities/services for children with disabilities

- 3-5yrs old pre-school children who are attending facilities/services for children with disabilities (e.g. "shoogaiji-tsuusho-shisetsu": daycare center for children with disabilities, etc.) are eligible for fee elimination.
- If multiple facilities are used, such as kindergarten/nursery/certified ECEC/unlicensed childcare facilities AND daycare center for children with disabilities, fee elimination is applied for the total amount of tuition fees.
- There is no need for new application for those who have received the grant decision of fees for support for children with disabilities to attend facilities ("shoogaiji-tsuusho-kyuufu-hi")

## in order to be designated a recipient of fee elimination (free childhood education and care),



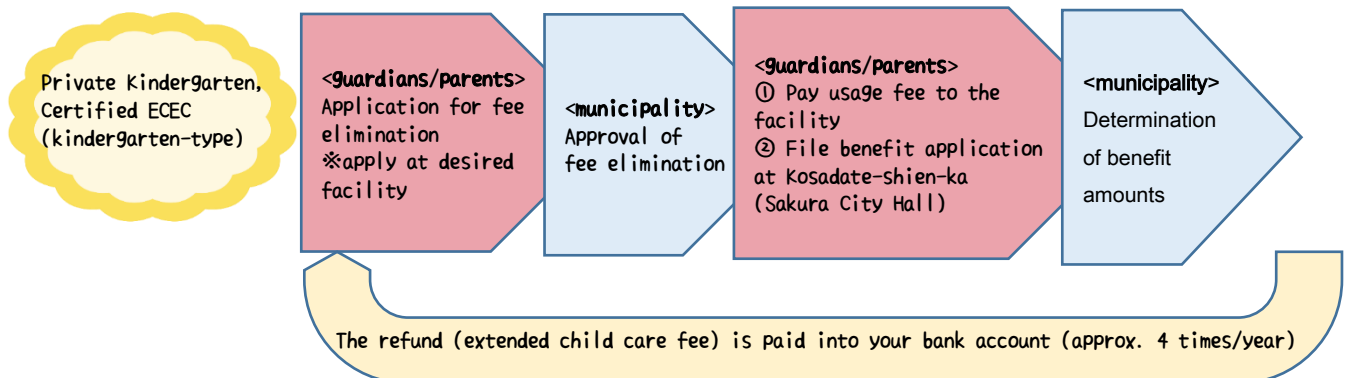
### Tuition Fee



### Extended Child Care Fee at Kindergarten

If it falls to the requirement for free elimination, first you need to pay to the kindergarten and then apply the application for the benefit to the municipality. After these procedures, benefit is refunded into your designated bank account.

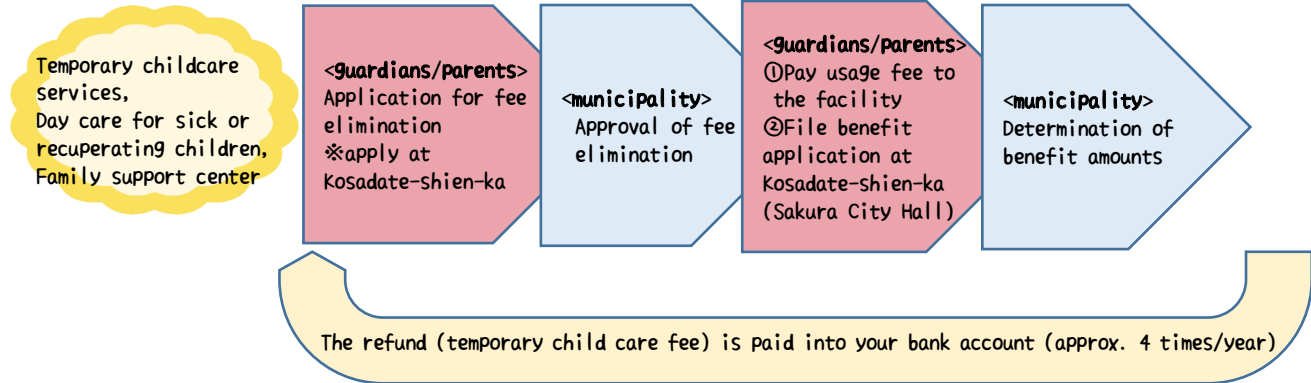
\*As for the public kindergarten, exceeded amount is billed by the municipality if the usage fee exceeds the maximum benefit amounts.



## it is necessary for you to submit your application in advance



### Temporary Childcare Fee

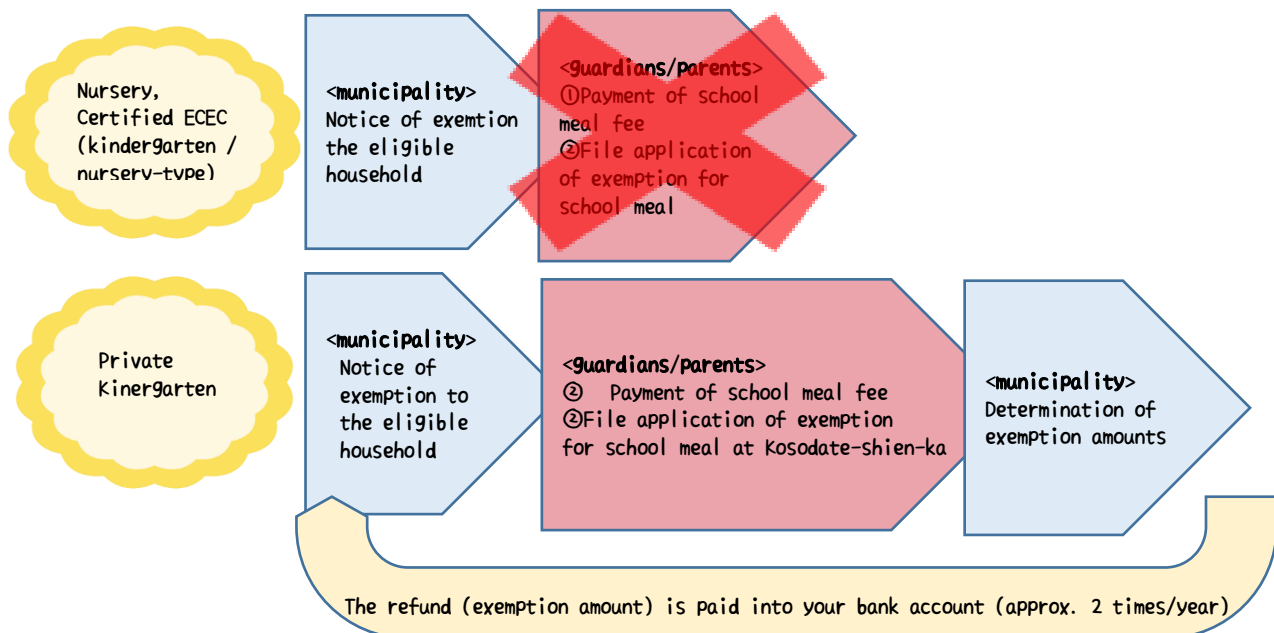


### School Meal Fee

As well as the special activity fee, etc., fee for school meal for 3-5yrs old children are to be paid by the guardian/parent (payment to the attending facility.)

※However, the fee for school meal shall be exempted for the following households: Households with annual income of considerably below 3.6million yen and/or households with many children shall be eligible for the exemption. After being calculated based on such as household annual income, there are notice of exemption in every March and September from the municipality to those who are eligible.

#### Cases for fee exemption for school meal



※As for the public kindergarten, please contact Gakumu-ka (School Affairs Section) for inquires.



## Requirements for the Need for Childcare



To be eligible for the system for needed childcare services, both of the parents or guardian need to fall under any of the following categories.

requirement	conditions
Employment	Working regularly 13 days or more/month AND 4 hours or more/day (rest time excluded) ※any employment status is permitted
Childbirth	<u>Maximum 5 months</u> : 2 months before, the month due, and 2 months after
Sickness	Hospitalization and/or outpatient treatment, physical/ mental disability, etc.
Nursing/Caring	Providing nursing/long-term care for a family member (relative living together) with illness and/or disability, etc.
Schooling	Attending school and/or vocational training school which is accredited under School Education Act (MEXT)
Childcare Leave	Having childcare leave ※Fee elimination is NOT eligible to the new-born child BUT to the child who is attending such childcare facility. ※Valid period is equivalent to the term written on the Certificate of Employment (Until the end of March of the FY in which the new-born child turns 1yr old.)
Job-seeking	<u>Maximum 2 months</u>

**For the children attending 3-5yrs class at nurseries/certified ECEC(nursery-type)**



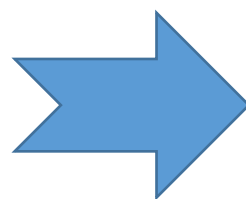
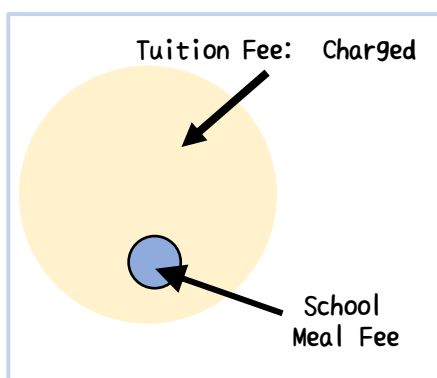
**Handling of School Meal Fee shall be changed**



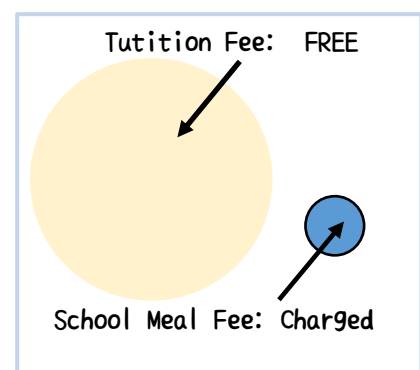
🌸 Under the new system, fee for school meal shall be paid by the parent/ guardian, while it was included in the tuition fee until then.

🌸 As for 0-2yrs class children, school meals fees are included as before for.

**Before** the new system



**After** the new system



## Frequently Asked Questions



Question	Answer
My child is now attending to a licensed nursery. Do I need to make a new application for the fee elimination?	There is no need for new application if your child is attending public kindergarten, licensed nursery, or certified ECEC. However, if your child is attending private kindergarten or unlicensed nursery facilities, it is necessary for you to file the application at the City Hall.
My child is now attending to a licensed nursery. I heard that we have to pay the school meal fee although the fee elimination is subjected. Is this true?	Until then school meals fee was included in the monthly fee at licensed nursery and certified ECEC (nursery-type) for 3-5yrs old class children, but from October 2019, school fees are to be paid by the parent/ guardian under the new system. Please contact your child' s facilitiy for the details regarding the fee and payment method for the school meal.
Does the fee elimination covers enrollment fee for kindergarten?	It shall be covered up to ¥25,700/month by the fee elimination system. This is calculated by the total amount of monthly tuition fee and converted monthly rate of the enrollment fee. Note that enrollment fee for certified ECEC is not covered by the fee elimination.
I was told that if the requirements for needs for childcare are satisfied, there is an elimination for the extended childcare fee as well. Is it possible to fulfill the requirement even if I am not a permanent employee?	Any employment status is acceptable. If you regularly work more than 13 days/month AND 4 hours/ day, it shall meet the conditions for " employment ". Please refer page. 5 for details regarding " Need for Childcare ". Note that extended childcare fee is not totally covered. Amount of benefit is determined upon the lower amount compared between the benefit limit amount of ¥450/day (max. ¥11,300/month) multiplied by the number of days of usage and your actual payment for extended childcare fee. (e.g.) (A)...number of days actually used (15days) x daily benefit (¥450) = ¥6,750 (B)...actual payment of extended childcare fee ¥8,000 Amount ¥6,750 (A) comes to be the amount of a benefit (it is lower compared with (A) and (B).)
Is it also eligible for the monthly fee for pre-school program targeted for 2yrs old at kindergarten (e.g. Pre-K?)	It is not eligible for any pre-school program such as pre-k.
If I do not fulfill the requirements for the needs for childcare anymore, can' t I use the extended childcare service at kindergarten anymore?	You can continue using the extended childcare service. However, please note that fee shall be paid by the parent/guardian.
Is there no need for me to pay the tuition fee to the facility after the implemented date of the new system? And how about the extended childcare service fee?	There is no tuition fee payment for kindergarten, nursery, and certified ECEC (payment occurs if the monthly fee exceeds ¥25,700/month.) For the case which extended childcare service fee is being eliminated, you need to pay the fee to the kindergarten as before. After the payment, you are to file the application for benefit for the reimbursement which is transferred to your bank account.
Under what condition shall be met for fee elimination for unlicensed childcare facilities, temporary childcare service, day care for sick or recuperating children, family support center?	If the circumstance fulfills the requirement for " Need for Childcare ", the fee is eliminated for the 3-5yrs old child (or under 3yrs old child of household with exemption form municipal residency tax) who is NOT attending 3-5yrs old class at kindergarten, licensed nursery, certified ECEC, etc. In order to be designated as a recipient, there is necessity to apply to the municipality in advance.
My child is 1yr old and using just the temporary childcare service. I heard that it is only eligible for the household with exemption from municipal residency tax to be fee eliminated. I don' t know whether my household is eligible or not.	Please refer to the notification of determination of municipal residency tax issued by municipality or your workplace. If you are not sure whether your household is subjected as the exempted household from the municipal residency tax, please confirm to the residency taxation department of the municipality where your address has been registered as of January 1 of the FY (As for Sakura City, contact City Tax Section " Shimin-zei-ka ".) Note that not all the household with exemption from municipal residency tax are fee eliminated, unless the circumstance satisfies the requirements for " Needs of Childcare ". Please refer page.5 for details regarding requirements for " Needs of Childcare ".

Question	Answer
My child is attending to a daycare center for children with disabilities. Do I need to submit new application for the new system?	You do not need to make a new application for the fee elimination.
What about children who are attending to kindergarten or nurseries outside of Sakura? Are they eligible for the fee elimination?	It is eligible no matter the kindergarten or nursery is outside Sakura or not, as long as your address has been registered in Sakura City. However, you need to apply for the fee elimination in advance to Sakura City for the children attending to kindergarten, certified ECEC, and unlicensed child care facilities.
I am currently working using childcare facilities within workplace. Am I eligible for the fee elimination?	If the facility is approved as an unlicensed child care facility, it is eligible. If it is not approved until now, it shall be eligible at the point of registration to the administrative division. Please ask your workplace if it is registered or not.

(c.f.) school year age is based on the age as of April 1.

Class by age for School Year 2022 (April 1, 2022–March 31, 2023)

CLASS	CHILD BORN ON
3yrs old class (nen-sho )	April 2, 2018–April 1, 2019
4yrs old class (nen-chu)	April 2, 2017–April 1, 2018
5yrs old class (nen-cho )	April 2, 2016–April 1, 2017

Class by age for School Year 2023 (April 1, 2023–March 31, 2024)

CLASS	CHILD BORN ON
3yrs old class (nen-sho )	April 2, 2019–April 1, 2020
4yrs old class (nen-chu)	April 2, 2018–April 1, 2019
5yrs old class (nen-cho )	April 2, 2017–April 1, 2018

