

HELLO SAKURA



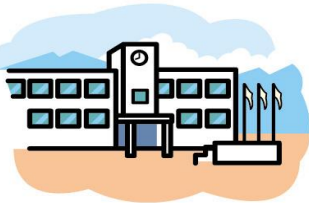
NO.261

Public Relations Section, Sakura City Hall, ☎(043) 484-1111, Ext.2275 or

☎(043) 484-6103; Fax:(043) 486-8720; E-mail: koho@city.sakura.lg.jp; URL: http://www.city.sakura.lg.jp

This is a free monthly English newsletter for foreign residents carrying excerpts from the Japanese newsletter published twice a month by the city of Sakura. Unless otherwise indicated, inquiries over the telephone or at the facilities are handled only in Japanese. If you do not speak Japanese, please have someone who speaks Japanese with you when you make inquiries. Inquiries in English can be answered generally on Mondays and Tuesdays through Koh'hoh-ka (the Public Relations Section) at Sakura City Hall.

RADIATION MONITORING IN SAKURA CITY



Many inquiries from citizens concerned about environmental radiation levels have been made after the Fukushima nuclear accident. The result of monitoring by MEXT (Ministry of Education, Culture, Sports, Science and Technology), which is continually monitoring radiation levels in Japan in cooperation with local governments, has shown that present radiation level has no effect on our health. However, Sakura City has purchased additional radiation scanners on its own accord and will continue detailed monitoring for securing citizen's life.

Monitoring at schools

In July, the second air radiation monitoring has been conducted at junior high schools, elementary schools, public kindergartens and private nurseries. The result showed that the radiation levels at all monitored locations were below 3.8 micro Sv/h, the radiation tolerance limit set by MEXT. Please refer to the City's website for detailed results.

City's future responses

- ① For more detailed survey, the City will purchase additional six gamma scanners in two types, three for air and three for surface. Moreover, monitoring points throughout the City will be increased.
- ② We will establish a Radiation Committee to share information and work in close cooperation with Japanese government and Chiba prefecture.
- ③ In cooperation with Chiba prefecture, we strive for improving present monitoring skills and system, for which a high accuracy management is indispensable.

Call *Kankyo-hozen-ka* (the Environmental Preservation Section), ☎484-6150 for further information.



Monitoring of Water at three treatment plants is conducted every Monday. The latest results are:

- Radioactive iodine: No new detection after 7.1 Bq/kg found at *Nambu* treatment plant on April 9,
- Radioactive cesium: No detection since the 1st monitoring.

Call *Suidoh-bu*, ☎485-1191 for further information.

Monitoring of Burned Ash from incineration plants

was conducted on July 11. The level of radiation was 5,430 Bq/kg, below the limit for temporary storage set by the Japanese government, 8000 Bq/kg. Call Sakura city, Shisui cho cleaning union, ☎496-7511 for further information.

~Sakura's 400th years anniversary celebration~

THE 13TH JIDAI MATSURI (FESTIVAL OF THE AGES)

To be held on Saturday, November 26

(Rain or shine, canceled in case of stormy weather)

Placing the Shin-machi street as the main venue of the festival, a virtual town in Edo era will be recreated. The main event includes: theatrical sword fights and famous arrest scenes performed by professional actors on the street, Japanese-traditional street performances, Kago (Japanese palanquin) services, introduction of child's play in Edo era, and lots more. Street So-run (Sorani Bushi Dance on the street) is also scheduled along the station street of Keisei Sakura station.

WIDE VARIETY OF PERFORMERS WANTED ! : At the Jidai Matsuri, we offer performers an excellent opportunity for wide range of traditional performances from Edo era to create the liveliness of streets.

VOLUNTEERS WANTED ! : Why not participating the festival putting on your own Japanese traditional costumes (Yukata, Kimono, and so on)? We are calling for volunteers who will do background works from preparation to operation on the day. We are also seeking for volunteers for traffic control, site preparation, volunteer ushers, and volunteer photo takers.

DETAILS FOR APPLICATION: Send fax or e-mail to 'Sakura Jidai-matsuri Jikkoh In-kai' secretariat, ☎484-6146, fax 486-2504, e-mail: sangyoshinko@city.sakura.lg.jp, stipulating your preferred section to participate and your personal particulars such as name, gender, age, address, and telephone number. Application deadline is Thursday, September 15.



PREY FOR PERMANENT PEACE IN THE WORLD

Monday, August 15 is the “day for mourning the war dead and praying for peace. Every year on this day, a nationwide memorial ceremony is held and a joint one minute's silence is offered exactly at noon. Following this silent prayer, Sakura City holds ‘Peace Ceremony’ at the City Hall every year, and the ‘Peace Bell of Sakura’ tolls in remembrance of the war victims and for the realization of everlasting world peace. The ceremony is open to the public. Those who wish to attend are asked to assemble by 11:50 at the elevator hall on the second floor of the main building, Sakura City Hall. Call *Koh'hoh-ka* (the Public Relations Section), ☎484-6103 for further information.



Happy Summer **HAVE SUMMER FUN AT KUSABUE-NO-OKA**

Enjoy the series of events for just about everything during summer vacation with your family and friends at Kusabue-no-oka! All through August, every day's special events are to be offered. For example, you can enjoy small animal petting & goldfish scooping on Wednesday, August 3 and a treasure hunting game on Thursday, August 25. Also, an insect exhibition featuring rhinoceros beetles (*kabuto-mushi*) and stag beetles (*kuwagata-mushi*) from around the world is being held through Monday, August 22. Other events includes various cooking classes, workshops that give children the chance to make handiwork for the summer vacation, various out-door activities and stargazing. The park is open from 9:00 to 17:00 daily (no admittance after 16:00 except for some evening events).



Previous booking by phone is necessary for all events/classes except for the insect exhibition and *bon-odori* dancing on Saturday, August 13, from 18:00. As for other events in August, visit the web-site: <http://www.kusabue.shiteikanri-sakura.jp/10natuyasumi.html>.

Admission fee to Kusabue-no-oka is ¥300 for junior high school & elementary school students, ¥150 for preschool children, and ¥400 for others. Admission fees do not include fees for events/classes. Call Kusabue-no-oka, ☎485-7821 for further information.

CITY EMPLOYMENT OPPORTUNITIES

The city of Sakura announces job opportunities for city professionals as well as the pre-employment examination schedule as shown below:

Job opportunities

Job category	Number of openings	Age requirement
Nursery staff	about 5	Those who were born between April 2, 1976 and April 1, 1992.
Preschool teacher	1	
Nutritionist	1	
Health nurse	1	Those who were born between April 2, 1976 and April 1, 1991.
Speech therapist	1	

Qualification Requirements

Applicants are required to have Japanese license for the respective position (including those who will have obtained one by Spring of 2012).

Pre-employment examination

The first-stage examination will be held on Sunday, September 18 at Sakura Junior High School. Application leaflets are available at the City Hall, city branch offices, and the Citizens Service Centers. If you would like to be mailed a copy of application leaflet, please send a letter to *Sohmu-ka*, Sakura City Hall, 〒285-8501, 97 Kairinji-machi, Sakura-shi, enclosing a self-addressed ¥120-stamped return envelope (A4 size), separately providing your name and address with zip code. You can also download it from the city homepage. The application is accepted between Monday, August 1 and Friday, August 12. Call *Sohmu-ka* (the General Administration Section), ☎484-6210 for further information.

PLEASE SUBMIT YOUR STATUS REPORT FOR ‘CHILD REARING ALLOWANCE’ & ‘SINGLE-PARENT FAMILY MEDICAL EXPENSE SUBSIDY’

CURRENT RECIPIENTS of the “Child Rearing Allowance” and/or “single-parent family medical expense subsidy” need to submit a *genkyoh-todoke* (current status report form) to continue receiving the benefits. The City is sending notices on the required documents for this report to applicable families. Those who received the “Important notice on receiving the Child Rearing Allowance” after June 1 need to present the enclosed green-paper form “Notice on ground for Departure Direction” and other attachments. Status report forms are accepted from Monday, August 1 to Wednesday, August 31 (except Saturdays and Sundays) at *Jidoh seishoh'nen-ka* (the Children and Youth Section) in the City Hall. If you receive only Single-Parent Family Medical Expense Subsidy, you can send the form by mail. Otherwise, the report documents should be submitted to the City Hall upon interview to confirm current status. Please note that failure to submit the form will result in termination of the allowance/subsidy from August onwards. Call *Jidoh seishoh'nen-ka*, ☎484-6140 for further information.



FREE COUPONS FOR COLON CANCER EXAMINATION

Colon cancer is one of the most common cancers in Japan. The number of people who suffer from colon cancer increased six times in 30 years, and the risk of it begins to increase after the age of 40. It is said that 80 % of cancer cases found at hospitals are advanced cancer. Periodical checkup is very important for early detection to increase chances of cure. The city of Sakura is to send free coupons for colon cancer examination to Sakura citizens who are **40, 45, 50, 55, and 60 years of age as of April 1, 2011**. We highly recommend you to take the examination on this occasion. Coupons are to be sent out from autumn, but even before receiving the coupon, the examination is free for those who have Checkup Slips with 'C' marks on it. So be sure to bring your Checkup Slip. If you do not have one, please call *Kenkoh-zoh'shin-ka*, ☎485-6711.



CERVICAL CANCER VACCINATIONS

RESUMED FOR ALL THE GIRLS OF TARGETED GRADES

The cervical cancer vaccination, which has been suspended due to short supply, now has been resumed as we have secured enough vaccines. All the junior-high school students and the 1st grade senior high students now can get vaccination against cervical cancer. Call *Kenkoh-zoh'shin-ka*, ☎485-6711 for inquiries.



FREE CLASSES FOR PET OWNERS



Chiba-ken *Dohbutsu Aigo Center* (Animal Owner's Guidance & Animal Protection Center) in Tomisato City will offer a talk & guidance on pet care & diseases and a tour of the Center on Wednesdays in August through August 24, 10:00 - 11:30. Participation is open to elementary school pupils of grades 4 - 6 and their parents, and is free of charge. Only 5 pairs are accepted on a first-come, first-served basis each time. Please note that some classes might be booked up quite soon. To apply, call the Center, ☎0476-93-5711.



SUMMER FESTIVAL AT USUI



Why not join the 16th *Usui Furusato Nigiwai Matsuri* on Saturday, August 20, 14:00-22:00 on the street in front of Sakura Concert Hall and Lake-Pia Usui. You will enjoy various events, such as *Wadaiko* drumming, *rock-sohran* dancing, as well as dashing fellows carrying *mikoshi* portable shrines. Also, a summer concert by three bands of junior high school students of Usui area and Fire Department Bands will be held at the Concert Hall. Call the planning committee, ☎461-1871 for more information.

RENEWAL OF INSURANCE CERTIFICATE FOR 'MEDICAL CARE SYSTEM FOR ELDERLY AGED 75 & OVER'

Please Use The New Certificate (Blue) After August 1, 2011

After turning 75 years of age, your insurance will be switched from its previous form to '*Koh'ki-koh'reisha Iryoh Hoken*' (the Medical Care System for Elderly Aged 75 & Over). Citizens who are between 65 and 74 years of age and whose disability level has been officially assessed and recognized are also eligible. As the current certificate (orange colored) expired on July 31, 2011, a new blue colored certificate, effective as of August 1, was sent to the insured by *kan'i-kakitome* (simplified registered mail). Also, the renewed Certificate (no color change) of Eligibility for Limited Payments and Reduced Standard Contributions, which reduce your payment when you are hospitalized, was enclosed for eligible persons.

Call *Kenkoh-hoken-ka* (the Health Insurance Section), ☎484-6136 for further information.

HUNTING BY SHOT GUN TO CONTROL HARMFUL BIRDS FOR AGRICULTURAL PRODUCTS

Hunting by shot gun will be carried out during the period of Thursday, August 4 - Thursday, August 25, 8:00-17:00. Please be aware of this while you are outdoors, even though the hunters are instructed to be well-mannered, and take every precaution not to cause an accident. Call *Nohsei-ka* (the Agricultural Administration Section), ☎484-6143 for further information.



THE POPULATION OF SAKURA CITY

As of the end of June 2011, the Japanese population of Sakura was 176,202 (87,052 male and 89,150 female) in 71,287 households. Registered foreign residents accounted for 2,059. The combined population of Sakura City was 178,261.

HEALTH CHECKS FOR CHILDREN

Kenkoh Kanri Center (Health Management Center) ☎485-6711; *Seibu Hoken Center* (Seibu Health & Welfare Center) ☎463-4181; *Nambu Hoken Center* (Nambu Health & Welfare Center) ☎483-2812

AGES OF CHILDREN	August '11	TIMES	PLACES
Health consultation for children of 4 months born in March, 2011	3	9:30—10:30	Kenkoh Kanri Center
		13:30—14:30	
	10	9:30—10:30	Seibu Hoken Center
13:30—14:30			
<i>Mogu-mogu</i> (munching) Class for children of 8 months born in November, 2010	9	9:30—9:45	Kenkoh Kanri Center
	2		Seibu Hoken Center
	30		Nambu Hoken Center
For 18-month-old children born in February, 2010	23	13:15—14:15	Kenkoh Kanri Center
	22		Seibu Hoken Center
For 3-year-old children born in February, 2008	24	13:15—14:15	Kenkoh Kanri Center
	18		Seibu Hoken Center
Dental check for children born in February or August, 2009 or in August, 2008	5	13:30—14:30	Kenkoh Kanri Center
	25		
	8		Seibu Hoken Center
	19		
	11		

HEALTH CONSULTATIONS

Child development consultation for preschoolers (*Suku-suku Hattatsu Sohdan*) is available on **Thursday, August 4**, 9:00-12:00 at Kenkoh Kanri Center. If you feel distressed about your child's developmental or behavioral disorders, such as attention deficit disorder, do not suffer alone. Application required.

Consultation with public health nurse for all ages is available on ●**August 8**, 13:30 – 15:30, at Kenkoh Kanri Center, on ●**August 25**, 9:30-11:30, at Seibu Hoken Center, and ●**August 11**, 9:30-11:30, at Nambu Hoken Center. Public health nurse will help you to develop a healthier lifestyle. Application required.

Telephone counseling with public health nurse or nutritionist is available at any of the centers, 8:30-17:00, Monday - Friday. If you need a consultation with dental hygienist or speech therapist, call Kenkoh Kanri Center.

FREE ANTENATAL CLASSES

Free antenatal classes will be held at Nambu Hoken Center in August and September for expectant mothers to have the first babies between November, 2011 and January, 2012. The program includes instructions on nutrition and lifestyle for a healthy pregnancy, how to raise a healthy child, a lecture by a dentist, etc. Participation by expectant fathers is also recommended especially for the 2nd lesson. Each class is limited to 35 people. Application required. Please call Seibu Hoken Center for application and further information.

LESSONS	DATES	TIMES
1 st	Aug. 26	9:00-15:00
2 nd	Sep. 11	9:00-12:30

HOLIDAY & NIGHTTIME EMERGENCY MEDICAL SERVICES

Always be sure to bring your health insurance certificate !

HOLIDAY & NIGHTTIME CLINIC FOR CHILDREN'S DISEASES IN ACUTE & EARLY STAGE (Pediatrics):

For children aged 15 years old or younger. Open year-round for treatment at Kenkoh Kanri Center from Monday through Saturday, 19:00-6:00 (next morning). On Sundays, public holidays, and year-end/New year holidays (12/29-1/3) 9:00-17:00 (reception is available until 16:45) & 19:00-6:00 (next morning). Call ☎485-3355 for further information.

DAYTIME TREATMENT ON SUNDAYS, PUBLIC HOLIDAYS, & YEAR-END/NEW YEAR HOLIDAYS

Consultation with doctors (surgeon, physician, and dentist) will be available at the doctor's office who is on duty in a rotation system. Call ☎484-2516 to learn the doctor on duty.

NIGHTTIME TREATMENT ON SUNDAYS, PUBLIC HOLIDAYS, & YEAR-END/NEW YEAR HOLIDAYS:

Internal medicine & dental treatment are available at Kenkoh Kanri Center, between 19:00 and 22:00 (reception is available until 21:45). Consultation with surgeons and ENT doctors will be available at the doctor's office who is on duty in a rotation system. Call ☎485-6711 to learn the doctor on duty.