

Public Relations Section, Sakura City Hall, ☎(043) 484-1111, Ext.2275 or

☎(043) 484-6103; Fax:(043) 486-8720; E-mail: koho@city.sakura.lg.jp; URL: http://www.city.sakura.lg.jp

This is a free monthly English newsletter for foreign residents carrying excerpts from the Japanese newsletter published twice a month by the city of Sakura. Unless otherwise indicated, inquiries over the telephone or at the facilities are handled only in Japanese. If you do not speak Japanese, please have someone who speaks Japanese with you when you make inquiries. Inquiries in English can be answered generally on Mondays and Tuesdays through Koh'hoh-ka (the Public Relations Section) at the Sakura City Hall. (Printed on recycled paper.)



BEAT THE HOT DAYS OF SUMMER AT SAKURA'S MUNICIPAL POOLS

Tuesday, July 15 to Sunday, August 31

General Information (Iwana Athletic Stadium) : ☎ 483-0131

Municipal Pools in Sakura City open for summer fun! *Iwana Undoh Koh'en (Sports Park) Pool* and *Johza Sohgo Koh'en Park Pool* are ideal for children's water play, offering a safe bathing with toddlers' paddling pools.

Iwana Undoh Koh'en Sports Park Pool: ☎484-1943

A 50-meter competition swimming pool and a paddling pool for toddlers

Johza Sohgo Koh'en Park Pool: ☎461-2611

A 25-meter competition swimming pool, a toddlers' paddling pool, and a children's pool with a mini slide

Hours 9:00-12:00 & 13:00-16:00 (Separate admission is required for each of morning and afternoon session.)

Fees ¥320 for senior high school students and above; ¥100 for junior high school & elementary school children; free for preschoolers. Lockers are available for ¥50.



NEGOH JUNIOR HIGH SCHOOL INDOOR SWIMMING POOL

Saturday, July 19 to Sunday, August 31 (Closed on Mon., Aug. 4 & 11)

* Might be closed without notice in case of bad weather or low water temperature.

☎ Shakai Kyoh' iku-ka (Social Education Section), 484-6189
(Open/Close status: ☎ Negoh Junior High School, 483-0139)



The swimming pool of Negoh Junior High School is open to elementary school children and above, who live, work, or study in Sakura City. **Free of Charge.**

Hours ①13:00 - 15:00 ②15:30 - 17:30 ③18:00 - 20:00 (Separate admission is required for each session.)

- Elementary school pupils must be accompanied by guardians, and during nighttime (18:00 - 20:00), the same applies also for junior high students.
- Swimming cap required. Inner tubes and beach balls are not allowed.
- Parking is limited. Please come by bicycle or on foot if possible.



KIDS' SWIMMING CLASS FOR FREE (Application Required)

At Negoh Junior High School Pool, swimming classes for elementary school children (beginners in grade 1-6, who can immerse one's face in water without fear) are offered for free. Total four lessons on **July 31 & August 1, 13:00-14:00 & 15:30-16:30**. The curriculum of the four lessons is identical. Limited up to 10 kids per one session, on a first-come, first-served basis.



SAKURA SHIMIN HANABI TAIKAI (CITIZENS' FIREWORKS FESTIVAL)

19:00 SAT., AUGUST 2* AT IMBANUMA LAKESIDE

*To be postponed to August 3 in case of bad weather

☎ Citizen's Fireworks Executive Committee, ☎486-6000,
http://www.city.sakura.lg.jp/sakura/hanabi/

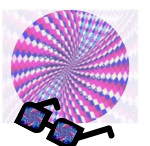
Ticket Sales Starts at 10:00, Tuesday July 1

Tickets can be bought through Lawson Ticket Service
(L cord: 35400, ☎0570-000-777).

■**Ticket for Site A:** Reserved fireworks-viewing area located in Furusato Hiroba Square, from which fireworks by Tezutsu-Hanabi (large bamboo cylinder held in the hands when it's fired) can be seen. ¥10,000 per allotted space. One space (2 meters square) with chairs. Can be used by up to five persons.

■**Ticket for Site B:** ¥1,000 per person.(¥900 for an advance ticket). In site B, visitors have to secure one's own space after entrance. The first 5,000 visitors to Site B will have *HoloSpexs* (Holographic Glasses)! ■**Fund contribution wanted!** Message announcement at the venue is offered. Also, a special viewing seat is presented in return to every fund contribution of 30,000 yen or more.

Accepted by July 7 through Sakura Chamber of Commerce, ☎486-2331.



Participants Wanted!

SIEF International Speech Contest

9:30-17:00, Sunday, September 28

Contact: SIEF (Tel/Fax) 484-6326, email: info@sief.jp, HP: <http://www.sief.jp>



Applications for the annual Speech Contest sponsored by Sakura International Exchange Foundation (SIEF) are now accepted by:

Thu, July 17 for elementary school pupils;

Wed, July 30 for junior high students and non-Japanese

(Scripts must arrive no later than Fri, September 5)

Topics are free for all the categories shown below:

[English Speech or Recitation Contest for Junior High Students] Two- to two and a half-minute speech or recitation in English by junior high school students who either live or study in Sakura City. The number of

participants is limited to 10 for speech and 25 for recitation.

[Japanese Speech Presented by Non-Japanese]

Three- to five-minute speech in Japanese language by non-Japanese people who either live, work, or study in Sakura City. The number of participants limited to five.

[English Speech or Recitation Presented by Elementary School Pupils]

One-minute or shorter speech or recitation in English by elementary school pupils who live in Sakura City. The number of participants limited to 60.

How to apply: Please apply through SIEF's website <http://www.sief.jp>, or print the required information on a reply-paid postcard, and send it to the address below. Handouts with application details are available at city libraries, elementary/junior high schools, and other public facilities in Sakura City.

SIEF Address: SIEF office, Rainbow Plaza Sakura, 198-2, Kaburaki-machi, 285-0025

On Sale from 10:00 July 4!

SHOPPING COUPON WITH 10% PREMIUM

☎ Sakura Shohkoh Kaigi-sho, ☎484-2331

Under the support of the City, Sakura Shohkoh-kaigi-sho (Sakura Chamber of Commerce and Industry) puts Sakura Premium Shopping Coupon on sale, with which you can use 10% more than the coupon purchase price at the participating retailers. Coupons are ¥10,000 per book (¥500x22 tickets*) and valid through November 30. Sales is limited to three ticket books per person, and will end as soon as the tickets are sold out. Available at 4th floor of Shizu Station Bldg, 2nd floor of Yukari Plaza, 3rd floor of Lakepia Usui, Sakura City Kankoh Kyohkai and Sakura Shohkoh Kaigi-sho ([On and after July 5, only at Sakura Shohkoh Kaigi-sho](#)).

* Nine tickets out of 22 can be used only at large-scale retailers.



ANNUAL RENEWAL OF NATIONAL HEALTH INSURANCE CERTIFICATE



①NHI: ☎ Kenkoh Hoken-ka, ☎484-6125 ②Kohki Kohreisha HI: ☎484-6136

Certificate of ①National Health Insurance (NHI) and ②Kohki Kohreisha (Latter-Stage Elderly) Healthcare Insurance is due to be renewed shortly. A new certificate card valid for one year from August 1, 2014 will be issued in mid-July and delivered to the insured by registered mail. The color of the new certificate is ①purple and ②green respectively. When the new card is delivered, please make sure your personal particulars such as name, address, etc. are correctly recorded, then, please discard the old one after cutting it up.

☎ Kenkoh Hoken-ka, ☎484-1783

WHAT IS NHI (NATIONAL HEALTH INSURANCE)?

Japan's national health insurance is divided into two main programs: the National Health Insurance (NHI) and employer-sponsored health insurance. All foreigners who have permission to stay in Japan for at least one year have to join one of these programs.

Please be sure you pay NHI insurance tax in time to avoid delinquency charge.

“Kokumin Kenkoh Hoken Gendogaku Tekiyou Nintei Shoh (Certificate for the application of the maximum fee)” also expires after July 31. Please make sure you take necessary renewal procedure if you need it in and after August.

Sending-out of Tax Payment Notice

In mid-July, the City will send out payment notice of ①NHI tax to householders and ②Kohki Kohreisha HI premiums to the insured. In ①, householders have tax obligation even if they are not NHI insured if there is at least one NHI insured in the household. In ②, the insured's spouse and the householder of the insured's family have joint obligation of the payment. In general, these tax and premiums are deducted from the payer's annuity*. However, there are cases where the payment should be made by payment slip or bank account transfer. Please make sure your payment is made properly.

*Cases payment is made by deduction from annuity:

- ①NHI: Householder aged between 65 and 74 who is NHI insured and receiving public annuity of 180,000 yen per year or more (Excluding householders not insured under NHI and households with an NHI insured aged under 64)
- ②Kohki Kohreisha HI: Insureds receiving public annuity of 180,000 yen per year or more (Excluding certain cases)

Under certain conditions (e.g. you have paid NHI tax without delinquency in the past, etc.), you can change the payment method from annuity-deduction into “Bank Account Transfer” after you complete the prescribed paperwork. For inquiries on NHI tax payment, please call Shuhzei-ka, ☎484-6116.

Start of “TEMPORARY WELFARE BENEFIT” & “TEMPORARY SPECIAL BENEFIT FOR HOUSEHOLDS WITH CHILDREN”

☎ Consultation Desk of Ministry of Health, Labour and Welfare, 0570-037-192 (9:00-18:00, including weekends)
☎ Shakai Fukushi-ka (Social Welfare Section, for inquiries on procedure), 484-6021/484-6034

In order to mitigate the impact of the consumption-tax rise on low-income households and households with children, application for either of the benefits described below is to be accepted **from July 24 through October 24**. Starting on July 23, application forms are to be sent to households that meet the eligibility conditions. (Please note that there might be cases the benefit cannot be paid even if you received the application form.) Please call for details.



Temporary Welfare Benefit

Eligible persons*: Those who are registered as Sakura citizen as of January 1, 2014 and wasn't levied FY2014 Resident Tax (Per Capita Municipal Resident Tax)

Benefit amount: 10,000 yen per eligible person. In addition, if the person is receiving any of prescribed benefits or allowance such as Rohrei Kiso Nenkin (Basic Old Age Pension), Jidoh Fuyoh Teate (Child Rearing Allowance), etc., 5,000 yen per such person is to be added to the said 10,000 yen.

* Those who live on public assistance or dependents of someone who are levied Resident Tax are not eligible.

Temporary Special Benefit for Households with Children

Eligible persons*: Those who received Child Allowance (including special payments) for January 2014 and whose income in FY2013 was within the limitation prescribed in the Child Allowance program.

Benefit amount: 10,000 yen per child eligible for Child Allowance (including special payments).

*Recipients of Temporary Welfare Benefit or those who live on public assistance are not eligible.



Career Fair for Welfare Services Job Seekers in Chiba Prefecture

13:00 – 16:00, SUNDAY, JULY 13

☎ Chiba Prefecture Social Welfare Center for Social Service Human Resources, ☎222-1294
<http://www.chibakenshakyo.net/>

For social welfare job seekers, job consultation and individual interviews by recruiters are offered in order to secure human resource and support the employment of young people.

- **Place:** Makuhari Messe International Convention Hall
2-1, Nakase, Mihama-ku, Chiba-shi (5 min. walk from JR Kaihin Makuhari Sta.)
- **How to participate:** Participation is **free**. Please come to the venue on the day. No resume is required.



KID'S WATERFRONT TOUR

9:00 to 15:45, Monday, July 28

Won't you learn about water of Imba-numa lake and wildlife in waterfront? Participants will observe Imba-numa lake from a houseboat (in the morning) and visit marshy areas in the city and enjoy catching fish (in the afternoon). Eligible kids are 4th to 6th grade pupils of elementary school who live in Sakura. Limited to 20 kids (First come, first served). Please send a postcard or E mail to Kankyoh Seisaku-ka of the city hall with participant's personal information (name, address, telephone number, school, and year grade). Application must arrive no later than **Monday, July 14, 2014**.

FREE CONSULTATION

FOR FOREIGN RESIDENTS

- Legal matter, divorce, immigration, visa, insurance, labor problem -



Saturday, July 12
13:00 to 16:00 (45 min. per person)

- ◆ Reservation required: ☎297-0245, Fax:297-2753,
E-mail: kudo@ccb.or.jp
 - ◆ Interpreters available on prior request*
 - ◆ At Chiba International Center
(5-min. walk from Kaihin Makuhari Sta. South Exit)
14th Fl., Marive East, World Business Garden (WBG)
2-6, Nakase, Mihama-ku, Chiba
- *Must be made at least 10 days before the consultation.



Japanese Class for Children during Summer Holiday

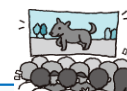
For children at elementary and junior high school ages living in Sakura City.

10:00 – 12:00, August 18, 19, 20, 21 & 22

At Usui Kohmin-kan

Fee: 200 yen (Please pay at the venue on Aug. 18.)
How to apply: Submit application form to your school teacher with your name, grade, class & telephone number **no later than Friday, July 18**.
Call Shidoh-ka. ☎484-6185 for inquiries.

Free Screening of Children's Animation Films



Negoh Kohmin-kan Community Center

“Heidi, a Girl of the Alps”

10:00-12:00, Wednesday, July 30

Up to 40 children. Application required and will be accepted on a first-come, first served basis. All infants must be accompanied by parents/guardians. No food or drink is allowed. Call Negoh Komin-kan. ☎486-3147.

POPULATION OF SAKURA CITY

As of the end of May, the Japanese population of Sakura was 175,442 (86,617 males and 88,825 females) in 73,438 households. The number of registered foreign residents was 2,171. The combined population of Sakura City was 177,613.



AGRICULTURAL PEST CONTROL BY RADIO CONTROLLED HELICOPTER

☎ Shokubutsu-boh' eki Kyohkai (the Plant Protection Association), ☎485-6188

In order to prevent pests and rice diseases, pesticides will be sprayed over paddy fields in Sakura from approximately 4:00 am to 10:00 am on the following schedule:

<Caution!>

District	Date
Negoh and Yatomi	Mon. July 21
Sakura	Tue. July 22
Wada	Wed. July 23
Usui, Shizu, and Chiyoda	Thu. July 24

* *Date and time are subject to change in case of bad weather. In case there was any change, we will let you know over loudspeakers, etc.*

1. Refrain from entering or driving onto the districts on the date of the pest control.
2. Refrain from leaving food or drinking water outside in the subjected and nearby districts.
3. If covers for vehicles or crops are necessary, please contact the Association in advance.
4. Refrain from entering the paddies for about five days after the day pesticides were sprayed.

In case of contingency: Should you accidentally be exposed to or inhale the pesticide, please immediately rinse it away by gargling and using soap. If any symptom such as nausea appeared, please call the Association.

HEALTH INFORMATION



HEALTH INFORMATION FOR MOTHERS & CHILDREN				Holiday & Nighttime Emergency Medical Services	
Child Health Consultation for	July 2014	Center	Reception		
Children of 4 months , born in February 2014 	Tue. 01	Kenko KC	9:30 - 10:30	Nighttime on Sunday & Holiday (including Dec. 29 - Jan. 3) 19:00 - 21:45, Physician & Dentist at Kenkoh Kanri Center ☎239-2020	
	Wed. 30	Seibu HC	13:30 - 14:30		
	Fri. 11	Nambu HC	13:30 - 14:30		
Children of 8 months , born in October 2013 ("Mogu-Mogu Class") 	Fri. 04	Kenko KC	9:30 - 9:45		
	Fri. 25	Seibu HC			
Children of 18 month , born in January 2013	Tue. 15	Kenko KC	13:15 - 14:15		
	Tue. 08	Seibu HC			
	Wed. 23	Nambu HC			
Children of 3 years of age born in January 2011	Wed. 16	Kenko KC	13:15 - 14:15		
	Thu. 10	Seibu HC			
	Thu. 24	Nambu HC			
Dental Check for children born in January or July 2012 or in July 2011 * On the days with * mark, consultation on Speech Development is also available.	Thu. 03*	Kenko KC	13:15 - 14:15	365 Days a Year Pediatric Emergency at Kenkoh KC ☎485-3355 for children under age 16 Monday through Saturday: 19:00 - 5:45 (next morning) Sunday & holiday: 9:00 - 16:45 & 19:00 - 5:45 	
	Tue. 29				
	Mon. 07*	Seibu HC			
	Mon. 14				
	Thu. 17*	Nambu HC			
Child Development Consultation for preschoolers ("Suku-Suku Hattatsu Sodan") * Application required	Thu. 17	Kenko KC	9:00 - 12:00		
HEALTH INFORMATION FOR ADULTS (APPLICATION REQUIRED)					MATERNITY CLASS (MOM'S & DAD'S CLASS) For expect mothers (due date in October or November 2014) * Application required 9:00 - 12:00 Saturday, July 12 At Kenkoh Kanri Center
Consultation by Public Health Nurse * Application required	Thu. 03	Seibu HC	9:30 - 11:30		

Kenkoh Kanri Center ☎485-6712	Seibu Hoken Center ☎463-4181	Nambu Hoken Center ☎483-2812