

Public Relations Section, Sakura City Hall, ☎(043) 484-1111, Ext.2275 or
☎(043) 484-6103; Fax:(043) 486-8720; E-mail: koho@city.sakura.lg.jp; URL: http://www.city.sakura.lg.jp

This is a free monthly English newsletter for foreign residents carrying excerpts from the Japanese newsletter published by the city of Sakura. Unless otherwise indicated, inquiries over the telephone or at the city facilities are handled only in Japanese. If you do not speak Japanese, please have someone who speaks Japanese with you when you make inquiries. Inquiries in English can be answered generally on Mondays and Tuesdays through Koh'hoh-ka (the Public Relations Section) at the Sakura City Hall. (Printed on recycled paper.)



The 34th Sakura Asahi Kenko Marathon* *Let's Cheer Up the Runners!*

9:00 to 15:30, Sunday, March 29 (Rain or shine)

(*Entry is already closed.)

Sakura Asahi Kenko Marathon Secretariat, ☎485-2929
http://sakuraasahi.jp/

More than 10,000 runners from all over Japan will gather in Sakura to run around *Imba-numa* Lake. Mr. Yoshio Koide, the famous marathon coach and the chairman of the event, as well as other members of Sakura Athlete Club, will visit this event. At the venue, volunteers will support runners by handing out water and giving directions. Won't you watch the race and cheer the runners up? One of the good spots to spectate is *Furusato Hiroba*, where you could enjoy beautiful lake view with the windmill.

SCHEDULE ▶Opening of the event: 9:00 ▶Full marathon: 9:30
▶3 km run: 9:50 ▶10 km run: 10:40

PLEASE REFRAIN FROM COMING BY CAR!

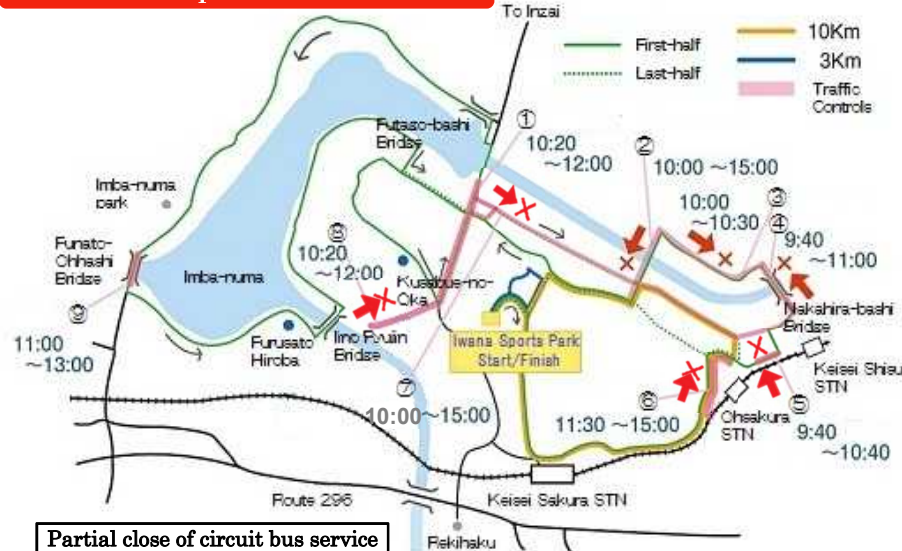
Free shuttle buses are available between North exits of Keisei Sakura & JR Sakura stations and Iwana Sports Park as follows.

▶To Iwana Sports Park: 6:30 to 9:00 ▶To the stations: 11:00 to 17:00

ROADS WILL BE CLOSED

On March 29, parts of the roads will be closed or regulated as shown below. Thank you in advance for your understanding and cooperation.

Marathon Map and Road Closures



Partial close of circuit bus service
In Uchigoh district, the circuit bus service will close from 9:20 to 16:14 on the event day.

①⑨: Alternate one-side traffic control
③④: One-way traffic control
②⑤⑥⑦⑧: Vehicles prohibited

Sakura Asahi Kenko Marathon Photo Contest

The All-Japan Association of Photographic Societies (Miyazaki, Chiba Office)
☎ 090-3317-4778

Original photo works are invited!

Conditions required are:

- ▶ Featuring the 34th Sakura Asahi Kenko Marathon
- ▶ Taken on the event day
- ▶ Without synthesis
- ▶ Original and unpublished
- ▶ Size: A4 to quarto (The long side must be 36cm or less)
- ▶ Color or Monochrome
- ▶ Single work (No series work is accepted)
- ▶ Up to 5 entries per person
- ▶ Put into transparent bags one by one, if printed using an ink-jet printer



Entry fee: 1,500 yen (in the form of Yuhbin Kogawase postal money)

Application deadline: must be received by **Monday, April 20**

Please send your works to:
Sakura Asahi Kenko Marathon Photo Contest, Asahi Shimbun Chiba Station, 3-10-4, Chuo, Chuo-ku, Chiba, 260-0013

Subsidy for International Exchange Activities

Sakura International Exchange Foundation, ☎ 484-6326

Sakura International Exchange Foundation (SIEF) subsidizes half of the expenses (with an upper limit) for international exchange activities carried out by groups in the city.

- ◆ Eligible groups: Groups that plans to conduct at least one international exchange activity during FY2015 (April 1, 2015 to March 31, 2016)
 - ◆ Application deadline is Friday, April 10
 - ◆ Please obtain and submit an application form at SIEF (Rainbow Plaza, 198-2 Kaburagimachi)
- For details, please visit: <http://www.sief.jp>



Have you completed Tax Return Filing? The Deadline is Monday, March 16.

Inquiries on Income tax: Narita Tax Office, ☎0476-28-5151

Resident tax: Shiminzei-ka, ☎484-6115

“NATIONAL FIRE PREVENTION CAMPAIGN”

March 1 to 7

Never Leave The Fire Unextinguished!



Sakurashi Yachimatashi Shisui-machi
Firefighting Association, ☎481-1217

Last year, a total of 119 fires occurred in Sakura, Yachimata and Shisui area. The leading cause of these fires remained to be arson and suspected arson. We tend to think that arsons happen only late at night or early in the morning, but in many cases they occur in the daytime. To prevent arson fires, please be sure not to leave flammable items outside your house.

**In case of fire, or to call an ambulance,
simply dial ☎119 (no prefix)**

◆ Seven tips to save your life from residential fire:

- Never smoke in bed
- Keep flammable things away from the stove
- Never leave cooking fire unattended. Turn off the cooking stove whenever you leave the kitchen even for short time
- Install a fire alarm in your house for immediate escape
- Use nightwear, bedclothes and curtains made of fireproof clothes
- Install a fire extinguisher for an early stage extinguishment
- Work out a cooperative system with your neighbors

◆ Residential fire alarms are mandatory

Having a fire alarm dramatically increases your chances of surviving a fire. To show the installation of a fire alarm in your house, the Firefighting Association distributes Fire Alarm Installation Seals to be put on your front porch. The seals are available at city branch offices and fire stations. Distribution is limited to one seal per household.



LIGHT-VEHICLE TAX

*Please do not fail to file
every change or cancellation
of your light vehicle!*



Light-vehicle tax is levied on a person who owns a kei-jidohsha including mopeds under 50cc, small bikes under 600cc, small-sized special vehicles and other light vehicles as of April 1 each year. Please make sure to complete the procedures for any change (e.g. change of owner, theft, scrapping of the vehicle) to avoid paying unnecessary taxes on the vehicle. The procedures are necessary also in a case you move out of Sakura or go abroad for a long period. Requirements and the office of application differ depending on the category of the vehicle. For details, please call the following offices:

- Motorbikes (125cc and under)
& small-sized special vehicles:
Shiminzei-ka, ☎484-6223
- Motorbikes over 125cc:
Chiba Unyu Shikyoku, ☎050-5540-2022
- Light vehicles with 3-wheels or 4-wheels:
Chiba Office of Kei-jidohsha Kensa Kyohkai,
☎050-3816-3114

TAX PAYMENT CONSULTATION

Shuhzei-ka (Tax Collection Section)
☎484-6118

In case a disaster, unemployment, business discontinuation, illness, theft, etc. makes it difficult for you to pay tax within the period, please consult us as soon as possible.

THINGS TO REMEMBER WHEN A LARGE-SCALE DISASTER OCCURS

Stay calm and do not dare to go home !

Bohsai Boh' han-ka (Crime & Disaster Prevention Section), ☎484-6131

When the Great East Japan Earthquake occurred in March 2011, public transportation was shut down and many people left stranded around stations and on roads. Immediate running out of the building may result in injuries from falling objects or fire, and too many people moving at once could cause heavy congestion that hampers rescue operations. To prepare for large disasters and prevent secondary damages, please keep the following in mind. ● Immediately after the attack, ensure your safety first, then stay at a safe place such as work place or other social facilities ● Collect traffic and damage information ● Always carry a portable radio and a map ● Keep sneakers, flash light, gloves, drinking water and emergency food at your work place ● Confirm in advance how to contact your family and where to meet when faced with a disaster



Disaster Emergency Message Services

When a large-scale disaster occurs, communication traffic to the disaster-stricken area extremely increases and makes phone calls very difficult to get through for days. During a time of a large disaster, emergency message services are available as shown below. Please check how to use these services on the trial days offered on the 1st and 15th of every month.

Disaster Emergency Message Dial 171 (to leave/check a voice message)

Dial 171 and you can post a voice message. You can also check the voice messages posted by people in the disaster area by inputting their phone numbers. This service is available on regular telephone (analog line), public pay phone, cell phone, PHS, and smartphone.

Disaster Emergency Message Board (for cell phone, PHS, and smartphone. To leave/check a text message)

Select “Disaster Messaging Board” on the top page of your mobile’s Menu screen and post your safety status information in text so that it can be checked from mobile phones. You can also search for safety status text messages posted by people in the disaster area by inputting their phone numbers.



Opening of a New Nursery School & Starts of four Small-Scale Childcare Services



Kosodate Shien-ka (Child-rearing Support Section) ☎484-6245

On April 1, a new nursery school opens and four childcare services make new starts as “Small-scale Childcare Service (Type A & B),” which is offered for children aged between 0 and 2 under municipal license. Application is to be accepted from **March 2 to March 13**. For details, please call Kosodate Shien-ka.

Facility Name (Type)	Address	Tel	Capacity	Children's age	Open hours
Shizu Ekimae Mamii Sakura Hoikuen (L)	1656-9, Kamishizu	TBD	20	6 month – preschool	Weekday: 7:00-19:00 Saturday: 7:00-19:00
Mori-to-Shizen-no Hoikuen Nobinobi House (B)	103, Ebarashinden	486-4119	18	6 month – 2 years	Weekday: 7:00-19:00 Saturday: 7:00-12:00
Koh'en Ekimae Hoikusho Yuhkari My Kids (A)	6-4-1, Yuhkarigaoka	461-2441	18	6 month – 2 years	Weekday: 7:00-19:00 Saturday: 7:00-17:00
Kid's Patio Shizuen (B)	3F, Shizu Station Bldg., 1663, Kamishizu	463-8637	16	6 month – 2 years	Weekday: 7:30-20:00 Saturday: 7:30-20:00
Himawari Room Nishishizu (A)	104, Kurehru Shizu 1 st Bldg., 3-1, Nishishizu	497-6277	12	6 month – 2 years	Weekday: 7:00-20:00 Saturday: 7:00-17:00

* (L): Licensed nursery school, (A): A-type small-scale childcare service, (B): B-type small-scale childcare service



Kusabue-no-Oka Information



☎ Sakura Kusabue-no-Oka, 485-7821, <http://kusabue.shiteikanri-sakura.jp/>

Spring is just around the corner now! Won't you have a day at Kusabue-no-Oka with the first taste of spring?

■ Soba (Japanese buckwheat) Festival: March 7-8

- Soba slurping and refilling (free of charge, 11:00 - until soba is eaten up)
Soba noodles freshly made at Kusabue-no-Oka will be served by just a mouthful amount...but be careful! Your bowl will be refilled again and again so quickly!

- Sobagaki (Soba dumpling) making (200 yen, 10:00 -11:00)

- Soba crape making (200 yen, 14:00 -15:00)

■ Let's go looking for "Spring"! (300 yen, 10:00 -12:00)

Up to 20 people each. Reservation required.

- **March 14:** Wild-crafting of Yomogi herb & rice cake making

- **March 21:** Spring hunting quiz

■ Flower gathering & pressed flower making: March 14, 15, 21

(200 yen, 13:00 -15:00)

■ Snake shaped long bread making: March 15

(500 yen, 10:00 - & 13:00-)

* Up to 15 people. Reservation required.

■ Twig craft: Saturday, Sunday & Public Holiday in March

(300 yen, 10:00 -15:00-)



Kusabue-no-Oka Open Hours:

9:00-16:30 (November 1- March 19)

9:00-18:00 (March 20 - October 31)

Kindergarten children and younger :	Free
Elementary school & Junior high school children:	100 yen
High school students and above	410 yen
Adult with physical disability certificate & One carer	Free

Free Animation Screening for Kids & Parents

For elementary school kids, preschoolers and their guardians.
No reservation required.

NIGHT ON THE GALACTIC RAILROAD

(銀河鉄道の夜)

10:00 – 11:30

Wednesday, March 25

at Negoh kohmin-kan

☎ Negoh Kohmin-kan, 486-3147

Up to 40 people (first come, first served)

MAGIC TREE HOUSE

(マジック ツリーハウス)

10:00 – 11:45 (Doors open at 9:30)

Friday, March 27

at City Concert Hall

(S)

☎ Chuh'oh Kohmin-kan, 485-1801

Up to 500 people (first come, first served)

★No food or drink allowed ★Parking is limited. Please use public transport if possible

★Preschoolers must be accompanied by guardians

POPULATION OF SAKURA CITY

As of the end of January, the population of Sakura is 177,470 (87,510 males and 89,960 females) with 74,553 households. 2,266 registered foreign residents are included in the above.

HEALTH INFORMATION



HEALTH INFORMATION FOR MOTHERS & CHILDREN				Holiday & Nighttime Emergency Medical Services
Health Check-ups	Mar. 2015	Center	Reception	
Children of 4 months , born in October 2014 	Fri. 06	Kenkoh KC	9:30—10:30	
	Fri. 13	Seibu HC	/13:30—14:30	
	Tue. 17	Nambu HC	13:30—14:30	
Children of 8 months , born in June 2014 (“Mogu-Mogu Class”)	Tue. 03	Kenkoh KC	9:30—9:45	
	Thu. 26	Seibu HC		
Children of 18 months , born in September 2013	Tue. 10	Kenkoh KC	13:15—14:15	
	Wed. 18	Seibu HC		
	Wed. 25	Nambu HC		
Children of 3 years of age, born in September 2011	Wed. 11	Kenkoh KC	13:15—14:15	
	Thu. 19	Seibu HC		
	Tue. 24	Nambu HC		
Dental Check for children born in March or September 2012, or in March 2013 * On the days with * mark, consultation on Speech Development is also available.	Thu. 05*	Kenkoh KC	13:15—14:15	
	Tue. 17			
	Mon. 09*	Seibu HC		
	Mon. 23			
	Thu. 12*	Nambu HC		
Child Development Consultation for preschoolers (“Suku-Suku Hattatsu Sohdan”)	Thu. 05	Kenkoh KC Application required	9:00—12:00	
Mom’s and Dad’s Class for expectant parents due in June or July 2015	Sun. 08	Seibu HC Application required	9:00—12:00	

Nighttime on Sunday & Holiday
 19:00 - 21:45
 Dentistry & Internal Medicine at Kenkoh KC
 ☎239-2020

365 Days a Year Pediatric Emergency
 at Kenkoh KC ☎485-3355
 for children under age 16
 Monday through Saturday:
 19:00 - 5:45 (next morning)
 Sunday & holiday:
 9:00 - 16:45 & 19:00 - 5:45

To Find On-Duty Doctor
 Recorded audio guidance available
 8:30-22:00 on Sunday & Holiday
 ☎484-2516
 • Daytime treatment of Internal Medicine, Surgery, Dentistry
 • Nighttime treatment of Surgery and ENT (ear, nose & throat)
 * Treatment is provided at each doctor’s office

Health Consultation for Adults
 Consultation by public health nurse
 Fri, Mar. 20 at Seibu HC
 9:30—11:30
 *Application required

HEALTH INFORMATION FOR ADULTS

FREE MENTAL HEALTH CONSULTATION by PSYCHIATRIST

- Reservation can be made from March 2 through March 23 -
 If you are suffering from some mental disorders, e.g. having insomnia, depression, suicidal thoughts, please call for reservation of a free consultation offered by the City, a 40-minute consultation per person including 10-minute interview by public health nurse. Do not suffer alone!

Time	Date	Place
13:50 - 16:00	Tue. Mar. 24	Kenkoh KC

VACCINATION INFORMATION

FY2014 SUBSIDIZED VACCINATION ENDS ON MARCH 31

Kenkoh Zohshin-ka ☎485-6711

- Eligibility age for the following subsidized vaccinations changes when this fiscal year ends on March 31. Please do not miss the opportunity and make sure you get vaccinated before your eligibility expires!
- Pneumococcal vaccination for the elderly (At the same time, partial subsidy of 2000 yen for this vaccination is to be discontinued after April 1.)
 - Chickenpox vaccination for children aged 3 and 4 years (only for those who have not yet vaccinated nor affected with chickenpox)
 - 2nd MR (Measles & Rubella) for preschoolers (born between April 2, 2008 and April 1, 2009)

Kenkoh Kanri Center ☎485-6712	Seibu Hoken Center ☎463-4181	Nambu Hoken Center ☎483-2812