



Kōhō-ka (Public Relations Section), Sakura City Hall

☎(043) 484-1111 or (043) 484-6103; Fax:(043) 486-8720; E-mail: koho@city.sakura.lg.jp; URL: https:// www.city.sakura.lg.jp

This is a free monthly English newsletter carrying excerpts from the Japanese newsletter *Kōhō Sakura* (こうほう佐倉) issued by Sakura City. For a free subscription by postal mail, please send your request via email or fax to the above email address/fax number. In general, inquiries can be answered in English on **Wednesdays**, in Spanish on **Thursdays** and in Chinese on **Fridays**, through *Kōhō-ka*, City Hall. Except for these, questions can be answered only in Japanese at City Hall and/or other city facilities. Therefore, when making inquiries, please be accompanied by someone who speaks Japanese as needed.

COMMUNITY BUSES – CASUAL AND CONVENIENT LOCAL ALLIES!

Community buses make life convenient for both children and adults. With many households now owning a car, fewer people rely on public transportation such as buses and trains as the basis of their lives. However, with traffic accidents continuing to happen, local public transportation can play a major role in providing a means of community transportation. Why not make your life more convenient by easily using the community bus, one of the city's regional transportation systems?

Inquiries: Toshi Keikaku-ka (City Planning Section) ☎ 484-6164

Where to go on a community bus?

There are spots in the city where you can learn, eat and have a variety of experiences and you can also get around on the community bus. We take this opportunity to introduce spots that can be reached by two routes, the Azeta and Shimoshizu routes, accessible to various locations such as hospitals, cafes, etc.

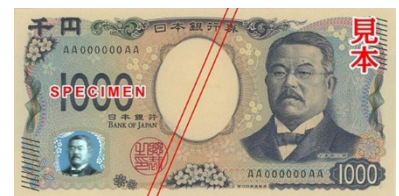
- 1 Agricultural products market "Kashi no Ki", Minami Yukarigaoka store. Located 3 minutes walk from the bus stop at Yukarigaoka Station South Exit.
Inquiries: Kashi no Ki ☎ 463-8877
- 2 Sunflower field in Azeta. Located 3 minutes walk from Azeta bus stop.
Inquiries: Kōen Ryokuchi-ka ☎ 484-6165
- 3 Wada Furusato-kan. History and folklore museum. 1 minute walk from Wada Furusato-kan bus stop.
Inquiries: ☎ 498-4000
- 4 Agricultural products market "Yatomi". 1 minute walk from Iizuka entrance.
Inquiries: Yatomi direct sales office ☎ 498-1316
- 5 DIC Kawamura Memorial Museum of Art. 9 minutes walk from Saifukuji and Sakado bus stops. (It takes 22 minutes from Monoi Station to Saifukuji bus stop)
Inquiries: ☎ 050-5541-8600



If you would like to check community bus discount information, timetables, destinations and related information, please access the homepage →



UMEKO TSUDA, THE WOMAN SELECTED FOR PORTRAIT ON THE NEW 5,000 YEN BILL.



出典: 財務省ウェブサイト <https://www.mof.go.jp/policy/currency/bill/231212.html>
The bills images have been provided by the Ministry of Finance (Zaimushō) website.

Umeko Tsuda was one of the first Japanese women to study abroad and the founder of what is now Tsuda Juku University. As a pioneer in women's higher education in Japan, on July 3 of this year, she was chosen as the face of the new 5,000 Yen bill, which was reprinted for the first time in about 20 years. In fact, Umeko is the daughter of Sen Tsuda, who was from the Sakura clan and has roots in Sakura, and who encouraged her to study abroad.

What kind of person is selected for the banknotes?

The people selected for portraits on banknotes are chosen on the following criteria: They must be widely known to the public, their achievements widely recognized and from the most accurate photographs possible to prevent counterfeiting. Besides Umeko Tsuda on the 5,000 Yen bill, Eiichi Shibusawa portraits the 10,000 Yen bill and Shibusaburo Kitasato on the 1,000 Yen bill, each of whom have made major contributions to the development of new industries and the advancement of science.

Sakura International Speech Contest

Date & Time: Oct. 20 (Sun) / 10:00~16:00

Place: Millennium Center Sakura

Application period: August 19 (Mon) ~ September 6 (Fri)

Target: Children from kindergarten to adults any age. ※Those whose native language is not English.

- ◆ Free of charge. ◆ Application required.
- ◆ To apply, please access the SIEF website →
- ◆ The participants are free to decide on English recitation and speech themes.

Kindergarten ~ Elementary School Students:

- The time limit is 1 minute.

Jr. High School ~ adults (No age limit):

- The time limit is 2~3 minutes.

- ◆ Participation is limited to 20 members in each category, first-come, first-served.

Inquiries: Sakura Kokusai Kōryū Kikin (Sakura International Exchange Foundation) (SIEF) ☎ 484-6326



SAKURA PEACE GATHERING "LEARNING FROM WAR AND SHOWING THE WAY TO NON-WAR"



Date: August 2 (Fri) ~ 4 (Sun)

Place: Millenium Center Sakura

Contents: ●Exhibition videos created by Chūo University students.
● Newspapers to convey peace created by the newspaper club of Toyama Kenritsu Isurugi High School in Toyama Prefecture and the newspaper club of Nagasaki Minami High School in Nagasaki Prefecture.
●Screenings: Ah-Himeyuri no tō (Himeyuri Tower), etc. ●Concert: Heiwa no uta (Peace song) and other songs by the Sakura Peace Gathering Executive Committee Choir.

Inquiries:

Sakura Heiwa no Tsudoi Jikkō linkai
(Sakura Peace Gathering Executive Committee)

☎090-8851-4354

Public Relations Section in charge

CALLING FOR WORKS FOR THE 70TH ANNIVERSARY OF SAKURA CITY MUNICIPAL ORGANIZATION ENFORCEMENT



★ LEARNING ABOUT SAKURA - CHILDREN'S WORKS EXHIBITION:

This is held every fall as a venue for elementary, Junior High School and High School students in the city to present their research about Sakura.

The best works will be exhibited on behalf of the school at the City Museum of Art and Yume Sakura-kan. Feel free to create your own work based on what you learned about Sakura!

Recruitment details: Works related to learning about Sakura. Free format.

Application method: Elementary and Jr. High School students, please apply by early September through your school.

High School students, please apply by early December through your school or bring it to the Social Education Section.

For details, please see the city website →

Inquiries: Shakai Kyoiku-ka (Social Education Section)

☎ 484-6189



MUNICIPAL POOLS OPEN UNTIL AUGUST 31 (SATURDAY)



◆50 m pool and infants pool at Iwana Undō Kōen (Iwana sports park).

◆25 m pool, infants and toddlers pools w/mini-slider at Jōza Sōgō park.

Time: 9:00 ~ 12:00 & 13:00 ~ 16:00 (Complete rotation system)

Fees: 480 Yen for High School students and above, 150 Yen for elementary & Jr. High school students. Infants free of charge. Free lockers. Please confirm the rules at each venue.

Inquiries for general information:

Koide Yoshio Commemorative Athletics Stadium ☎483-0131

Inquiries only during the opening period:

Iwana Undō Kōen pool ☎ 484-1943

Jōza Sōgō kōen pool ☎ 461-2611

★ FUTURE ART SAKURA

In anticipation of the 100th anniversary of the city's incorporation in 30 years, we are looking for drawings of the future of Sakura. Let's draw a picture of your favorite Sakura scenery that you want to preserve for the future or what you wish Sakura would look like!

Recruitment details: A picture about "Sakura's charm that we want to convey to the future".

Target: Elementary, Jr. High School and High School students living or attending schools in the city.

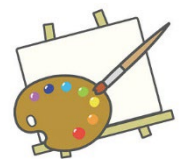
Application method: Apply by attaching drawing data to the Chiba Electronic Application service. →

Deadline: September 30 (Monday)

※The submitted works will be posted on the city website and displayed at city facilities.

Inquiries: Shakai Kyoiku-ka (Social Education Section)

☎ 484-6189





2024 Sakura Eastern League Official Game: Chiba Lotte Marines VS Yomiuri Giants

Date & Time: September 23 (Monday, Holiday)
The match starts at 1:00 PM

Location: Nagashima Shigeo Iwana Baseball Stadium ※ Free shuttle buses will be available from Keisei Sakura Station. There will be no general parking lot.

Inquiries: Sakura Eastern League Executive Committee ☎ 080-5819-8304 Sports-for-All Section in charge.



Copyright © Chiba Lotte Marines. All Rights Reserved.

KIDS CAP GIFT! On this day, starting at 11:00 on the day of the event, Jr. High School students and younger (500 people first-come, first-served) will get a Marines cap at a special booth. ※ The tickets will be distributed from 10:00. The start time may be changed.

The official Eastern League professional baseball game Chiba Lotte Marines VS Yomiuri Giants will be held. This year as well, a lottery will be held for visitors to win gifts such as Marines goods. For details, please see the city's website →

Sale of tickets: Will start on August 15 (Thur) from 10:00 ~ September 22 (Sun/Holiday) until 18:00 ※ Prices in () are for elementary school students.



Type of seat	Tickets bought in advance	Tickets bought on the event's day
Special infield	1,800 Yen (1,300)	2,000 Yen (1,500)
Special infield parking included	2,300 Yen (Sales through the web only).	-
Lawn - infield	1,000 Yen (500)	1,200 Yen (700)
Lawn - outfield	500 Yen	700 Yen

※Heartful discount – disability discount available: Please view the city's homepage for details.

◆ How to apply:

On the internet, please visit the Chiba Lotte Marines homepage →

Counter sales (From 9:00~17:00) ①Sakura City Hall, Shōgai Supōtsu-ka. ②Sakura Shōkō Kaigi-sho (Sakura Chamber of Commerce).③Sakura-shi Kankō Kyōkai (Sakura City Tourism Association).① & ② ticket sales only on weekdays.



AUGUST EVENTS THAT WILL BE HELD IN SUPPORT OF THE 70TH ANNIVERSARY OF SAKURA CITY MUNICIPAL ORGANIZATION ENFORCEMENT

Inquiries: Kikaku Seisaku-ka (Policy Planning Section) ☎ 484-3374

◆**Yūsuzumi-kai** (A nostalgic evening fair while listening to performances by local Yukari artists).

Date & Time: August 10 (Sat) 17:00 ~ 20:00

Place: Yume Sakura-kan

Inquiries: Ishiwata ☎ 090-9834-7526

◆**26th Usui Furusato Nigiwai Festival** (Sales of goods organized by neighborhood and shopping associations, concerts by local volunteers and summer concerts by elementary, Jr. High School and High School students).

Date: August 24 (Sat)

Place: At the intersection of Mitsukoshi Usui Storefront, Oise Park and Sakura Harmony Hall.

Inquiries: Usui Shopping Center Cooperative ☎ 461-1871

◆**Yūkari Roman (Yorimichi) Town March Project**

(Stalls of popular restaurants, breweries and beer brewing representing Sakura as well as live performances by local artists).

Date & Time: August 30 (Fri) 16:00 ~ 21:00

Place: Yūkarigaoka Station Square

Inquiries: Takeuchi ☎ 090-7998-6872

◆**Orido Park Summer Festival**

(Kitchen cars, sales of goods, festival area, dog run, local bands, Sakura Nishi High School dance club, Japan Gymnastics Association stage)

Date & time: August 31 (Sat) 15:00 ~ 21:00

Place: Orido Park (Osakidai 1-20-18)

Inquiries: Sakura City kitchen cars/Street Sales Association, Sawa ☎ 090-3409-9100

LET'S BE CAREFUL ABOUT FOOD POISONING

The hot and humid summer season is when food poisoning caused by bacteria such as Campylobacter, Enterohemorrhagic Escherichia coli O157, etc. is most likely to occur. Food poisoning can occur not only at restaurants but also at home. Please handle food carefully to prevent food poisoning.

KEY POINTS TO PREVENT FOOD POISONING AT HOME:

◆Check expiration dates. ◆Wash your hands thoroughly with soap before cooking. ◆Cook meat and fish thoroughly. ◆Do not leave cooked food at room temperature for long periods of time. ◆Foods that require refrigeration or freezing should be stored in the refrigerator or freezer as soon as you bring it home. ◆Do not overcrowd the refrigerator or freezer with food to keep it cold. ◆When cooking, use different knives and cutting boards for meat, fish and vegetables. ◆Only use frozen food as much as you need. Defrost food and do not repeat freezing and thawing. ◆To store food, divide it into portions and refrigerate or freeze them in clean utensils and containers. ◆When reheating food, heat it thoroughly.

Inquiries: Kenkō Suishin-ka (Health Promotion Section) ☎ 485-6711

FIRE ACCIDENTS CAUSED BY SPRAY CANS, MOBILE BATTERIES, ETC. HAVE OCURRED!

Fires have occurred inside collection vehicles due to spray cans, cassette cylinders and lighters being disposed of with their contents left in garbage collection sites. Additionally, if lithium-ion batteries are taken to a collection point without being removed from the body of a small home appliance, they may catch fire when placed in a collection vehicle. If a fire breaks out, there is a risk of serious damage to neighboring houses, citizens and collection workers making it impossible to perform the collection as planned and causing delays in collection at other sites. Kindly cooperate in the proper disposal. For details, please visit the website →

Inquiries: Haikibutsu Taisaku-ka (Waste Management Section) ☎ 484-6149





Subsidized Mouth Cancer Screening

Kenkō Suishin-ka (Health Promotion Section) ☎ 312-8228



Oral cancer screenings available at nearby dental clinics have begun. Applications are being accepted for individual examinations at 39 participating dental clinics in the city. Reservation required.

- Target: Sakura citizens over 40 years old (as of March 31, 2025). Those currently undergoing oral cancer treatment and follow-up cannot be accepted.
- Capacity: 500 people, first-come, first-served.
- Period: September 1 (Sun) ~ 2025 February 10 (Mon)
- Examination content: Interview, visual inspection, palpation. (Cytological examination if necessary).
- Consultation fee: 400 Yen. (Additional 300 Yen if a cytological examination is required).
- ※Free for 70 years old and over, those insured by the Chiba Prefecture Latter-stage Elderly Medical Care, those in households exempt from municipal tax, and those receiving public assistance. Please contact us for details.

To apply, please choose one of the following ways:

- ① Through the web, please view the QRC above.
 - ② By phone: Please call Kenkō Suishin-ka ☎ 312-8228
 - ③ Apply directly at the counter of Kenkō Kanri Center. When you receive your consultation ticket and questionnaire please make a reservation at any of the participating dental clinics and undergo a checkup.
- ※The oral cancer screening cannot be done with the "Examination ticket set" that comes in an orange envelope.
- ※Due to increased capacity for individual medical examinations, group examinations that were held until last year will not be carried out.

OSTEOPOROSIS SCREENING FOR WOMEN

We are now accepting reservations. As for the date, time and location, please refer to the "Examination Information" enclosed in the consultation ticket set or view the QRC →



Contents & Fee: Interview / X-ray examination of arm bones. 500 Yen.

Target: Those women who will reach 20, 25, 30, 35, 40, 45, 50, 55, 60, 65, 70 years old as of March 31, 2025.

※Reception will close as soon as the capacity is reached.

Inquiries:

Kenkō Suishin-ka (Health Promotion Section)
☎ 497-6750

CHILDREN'S MEDICAL EXPENSES

Subsidy receipt tickets for children's medical expenses are updated on August 1st every year. The new vouchers are scheduled to be shipped by the end of July.

●Please contact us if the siblings have different out-of-pocket costs.

For those who filed an income tax return or amended tax return on & after July 1st:

Your co-payment amount may change, so please submit a change notification to the section in charge.

Inquiries: Kodomo Katei-ka (Children and Family Section) ☎484-6140

LET'S PREVENT CERVICAL CANCER WITH VACCINES AND SCREENINGS

Cervical cancer affects many women every year and the number is increasing among women over the age of 20, but it can be prevented through vaccination and screening.

❖You can get vaccinated for free.

The following people can receive the vaccination free of charge. Catch-up vaccination is a system for women born between April 2, 1997 and April 1, 2008 who have not completed their third vaccination within the period covered by regular vaccinations. For details, please see the website ↑ Free period for girls in their first year of High School and those eligible for catch-up vaccinations is until March 31, 2025 (Mon).



Women eligible for regular vaccinations		Women eligible for catch-up vaccinations
Females between Elementary School 6 th grade until Jr. High school 3 rd grade.	Females in High School First grade (*)	Females born between April 2, 1997 until April 1, 2008 (*)
(*) To complete the vaccination for free, please get the first dose by the end of September		

❖Let's undergo a cervical cancer examination.

Regular check-ups are important for early detection of cervical cancer. Early treatment and finding "pre-cancerous lesions" before they become cancer can help prevent cancer.

For more information, please see the website →

◆For those who wish to have a medical examination:

A medical examination ticket is required for examination. If you do not have a consultation ticket, please apply through the Chiba Electronic Application Service → or contact the section in charge.

Inquiries: Kenkō Suishin-ka (Health Promotion Section)

☎ 485-6711

